

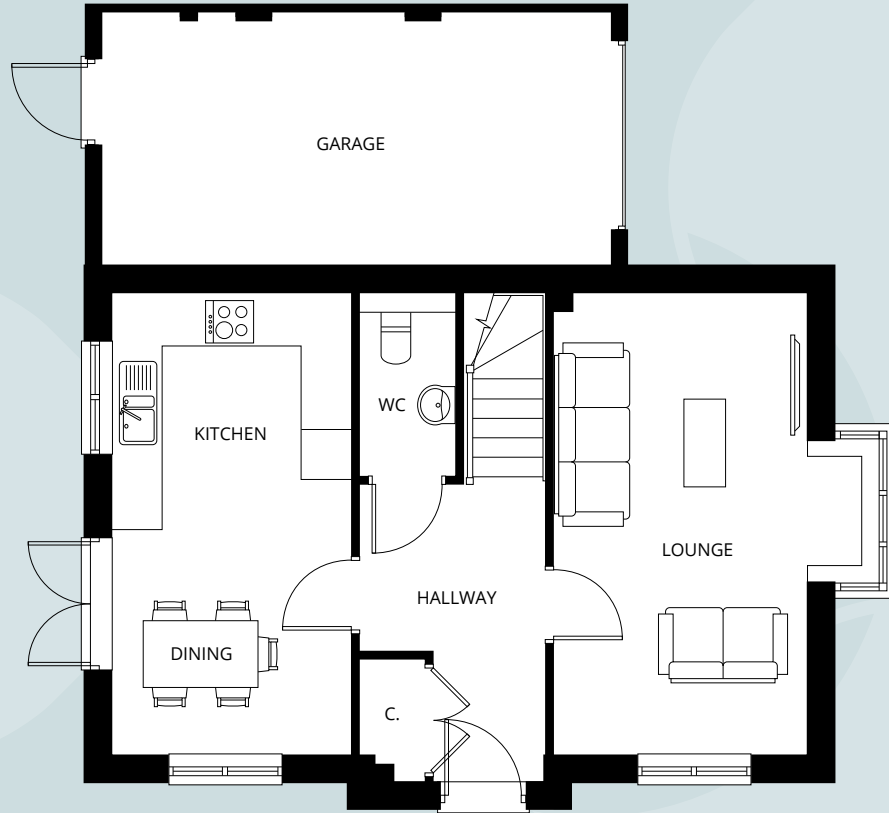
# THE PINE

3 BEDROOM DETACHED HOUSE

TOTAL INTERNAL AREA:  
94.3m<sup>2</sup> / 1,015 ft<sup>2</sup>

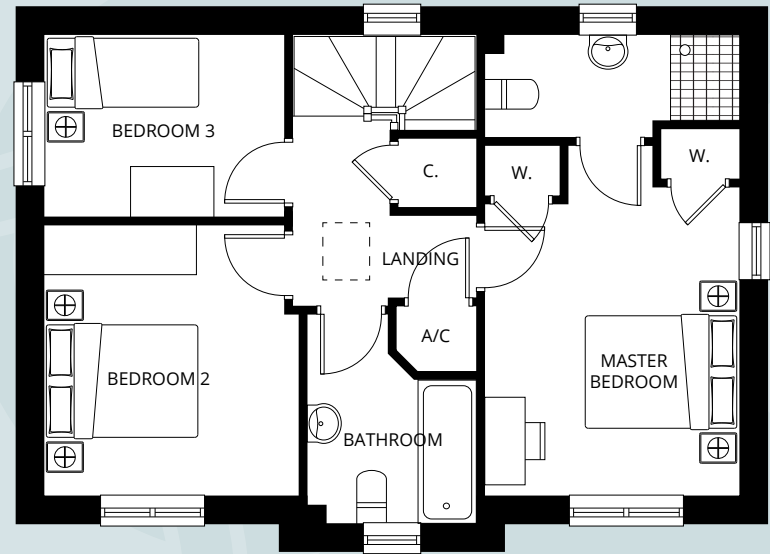


# THE PINE



Ground Floor

Kitchen	2.89 x 3.18m	9'5" x 10'5"
Dining	2.89 x 2.37m	9'5" x 7'9"
Lounge	3.74* x 5.55*m	12'3" x 18'2"
WC	1.15 x 2.22m	3'9" x 7'3"
Garage	6.09 x 3.05m	19'11" x 10'0"



First Floor

Master bedroom	3.09* x 4.23*m	10'1" x 13'10"
En-suite	3.09* x 1.06*m	10'1" x 3'5"
Bedroom 2	3.09* x 3.28*m	10'1" x 10'9"
Bedroom 3	2.91 x 2.21m	9'6" x 7'3"
Family bathroom	2.07* x 2.52*m	6'9" x 8'3"

Internal floor plans may be subject to alteration. Computer generated images are for illustrative purposes only. \*Dimensions listed are maximum.